

# Landcare support in the Port Phillip and Western Port region

## During 2015-16 Landcare in the region was supported by:

- 1 Regional Landcare Coordinator funded through the Victorian Landcare Program and employed by the PPWCMA
- 2 Sustainable Land Management Coordinators (2FTE) funded through the Australian Government National Landcare Programme and employed by the PPWCMA
- 1 Regional Landcare Facilitator funded through the Australian Government National Landcare Programme and employed by the PPWCMA
- 10 local Landcare Facilitators (6.0FTE) funded through the Victorian Local Landcare Facilitator Program and employed by various host organisations
- 2 local Landcare Facilitators funded through various sources and employed by various host organisations

## During 2015-16 the PPWCMA delivered the following Landcare support activities:

- 2 Regional forums for Landcare Network Leaders (14 people from 10 Landcare networks)
- 2 regional forum for Landcare Facilitators (12 people from 12 Landcare networks)
- 4 facilitated Conservation Action Planning workshops to improve project design (13 people from 12 Landcare groups and networks)
- 16 Conservation Action Planning support meetings with representatives from 6 Landcare networks
- 5 Catchment Action Round Tables to improve collaboration for natural resource management (50 people from 45 Landcare groups and networks)

## Victorian Landcare Program return on investment into Landcare in the PPW region for 2015-16:

VLP investment into PPW region = \$684,075

- Victorian Landcare Grants (\$204,000) + Regional Landcare Coordinator (\$142,000) + Local Landcare Facilitators (\$338,075)

Estimated return on investment = \$4,173,903

- Leveraged funding – National Landcare Programme (\$269,337) + leveraged funding – other (\$799,986) + volunteer time (extrapolated to all 85 groups and 13 networks @ 50% of reported group average) (\$3,104,580).

**Return on VLP investment: \$6.10 for every dollar**

This report reflects the activities undertaken by Landcare groups and networks only. Additional work undertaken by other community groups and volunteers is extensive and beyond the scope of this report card.

Cover photo: Anne Fitzpatrick, Yarra Valley Landcare Network Facilitator, with Kellie Gee of the Upper Yarra Landcare Group, promoting their "Landcare for Cyclists" event in June 2016.

Back page photo: Participants at the 2015 Yarra Catchment Action Round Table.

# Port Phillip and Western Port Landcare Report Card 2015-16



A snapshot of Landcare in the Port Phillip and Western Port Region from 1st July 2015 to 30th June 2016



The Port Phillip and Westernport CMA (PPWCMA) is one of ten regional Catchment Management Authorities in Victoria. The PPWCMA provides leadership to a range of stakeholder organisations and works to deliver integrated catchment management and sustainability of the region's natural assets by building cooperation, coordination and partnerships amongst these organisations.

[www.ppwcm.vic.gov.au](http://www.ppwcm.vic.gov.au)



# Snapshot of Landcare – Port Phillip and Western Port region 2015-16

85 Landcare Groups covering 777,101 hectares (60.8% of the region), including 1 new group

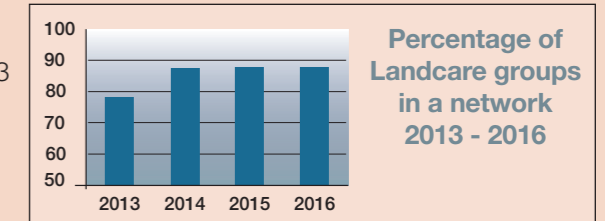
83.3% of all private rural land covered by groups

Average reported total membership in 2015-16 was 55.3 people per group



Over 2,966 members managing over 1,922 properties covering over 50,706 Ha (includes 391 new members recruited in 2015-16, managing 291 properties)

80 of the groups have formed 13 Landcare Networks.



2015-16 PPWCMA Community Grants (comprised of Victorian Landcare Grants and National Landcare Programme Grants)

65 groups and networks received \$182,663 of Victorian Landcare Grants for 7 projects and 58 support grants

12 groups received \$269,337 of National Landcare Programme Grants for 12 projects

Other Funding secured by Landcare in 2015-16:

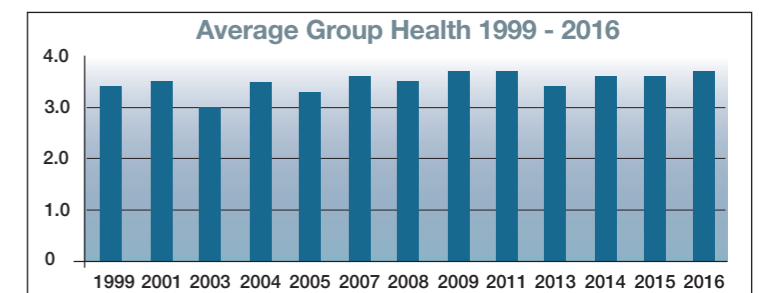
An additional \$799,986 was reported as having been received from a variety of other sources

Volunteers contributed an estimated \$1,552,290 value in reported volunteer time (@\$30/hr) delivering activities in 2015-16 related to on-ground works, learning, administration and communication.

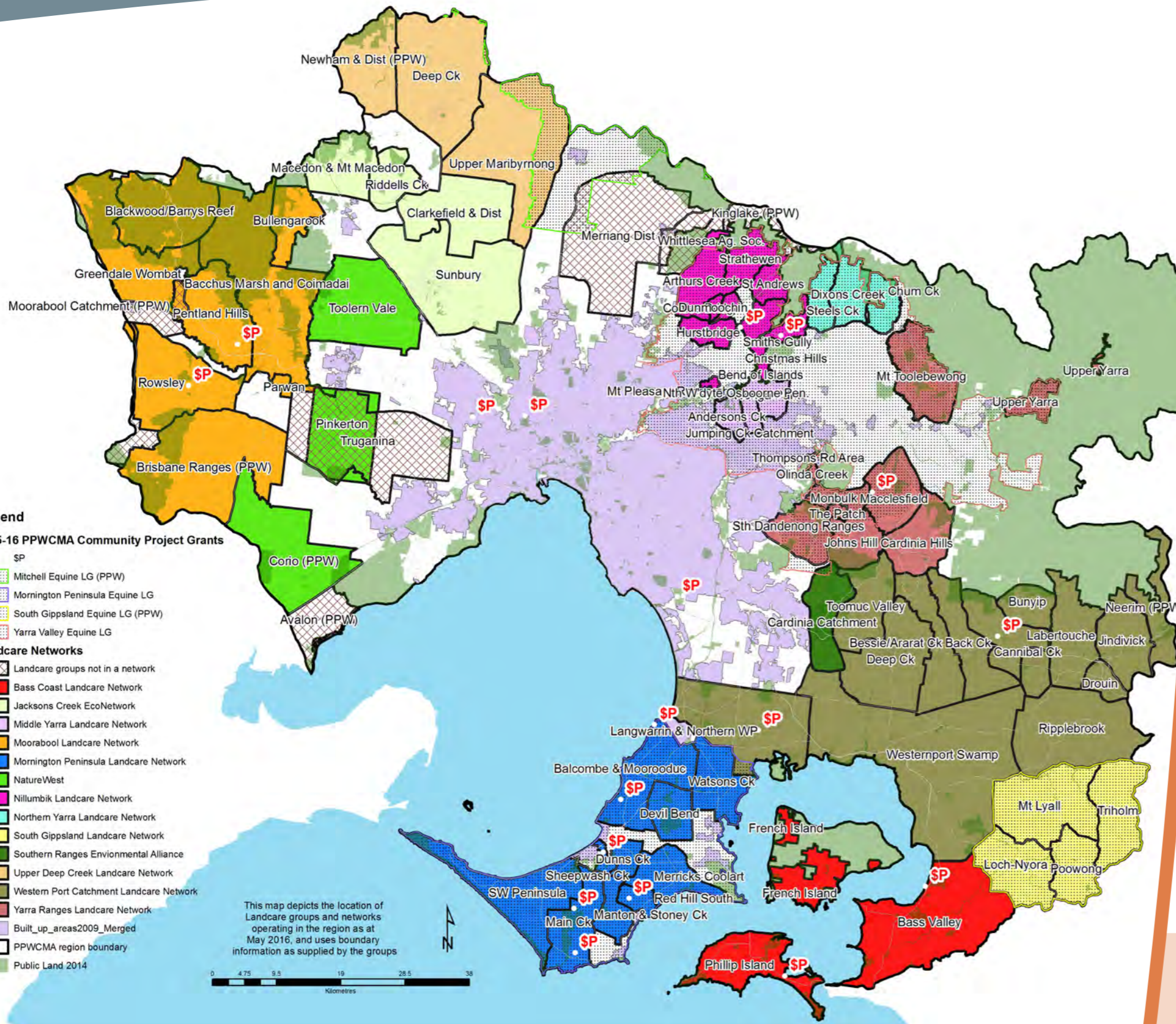
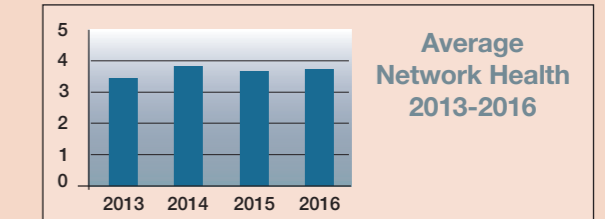
Landcare groups and networks reported for 2015-16 delivery of:

- a.** 474 ha of revegetation; **b.** 13 ha of direct seeding; **c.** 25 km of waterway protection from stock; **d.** 132 ha of remnant protection from stock; **e.** 4 ha of remnant protection through covenant or similar; **f.** 1,459 ha of weed control; **g.** 13,630 ha of rabbit control; **h.** 3,348 ha of fox control; **i.** 71 property management plans; **j.** 121 surveys (fauna, flora, weed, and property assessments)

Reported Group Health in 2015-16 averaged 3.7 out of 5



Reported Network Health in 2015-16 averaged 3.7 out of 5



Data is based on surveys completed by 49 Landcare groups and 9 Landcare networks for the 1st July 2015 – 30th June 2016 period.