

Port Phillip and Western Port Landcare Report Card 2016-17



A snapshot of Landcare in the Port Phillip and Western Port Region from 1st July 2016 to 30th June 2017

Snapshot of Landcare – Port Phillip and Western Port region 2016-17

84 Landcare Groups covering 706,740 hectares (55.3% of the region), including closing of 3 groups, and formation of 2 new groups

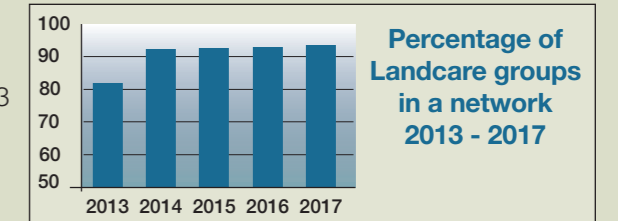
75.7% of all private rural land covered by groups

Average reported total membership in 2016-17 was 51.1 people per group



Over 2,857 members managing over 2,194 properties covering over 97,515 Ha (includes 342 new members recruited in 2016-17, managing 227 properties)

79 of the groups have formed 13 Landcare Networks



2016-17 PPWCMA Community Grants (comprised of Victorian Landcare Grants and National Landcare Program Grants):

- 53 groups and networks received \$183,968 of Victorian Landcare Grants for 8 projects and 47 support grants
- 13 groups and networks received \$251,282 of National Landcare Program Grants for 13 projects

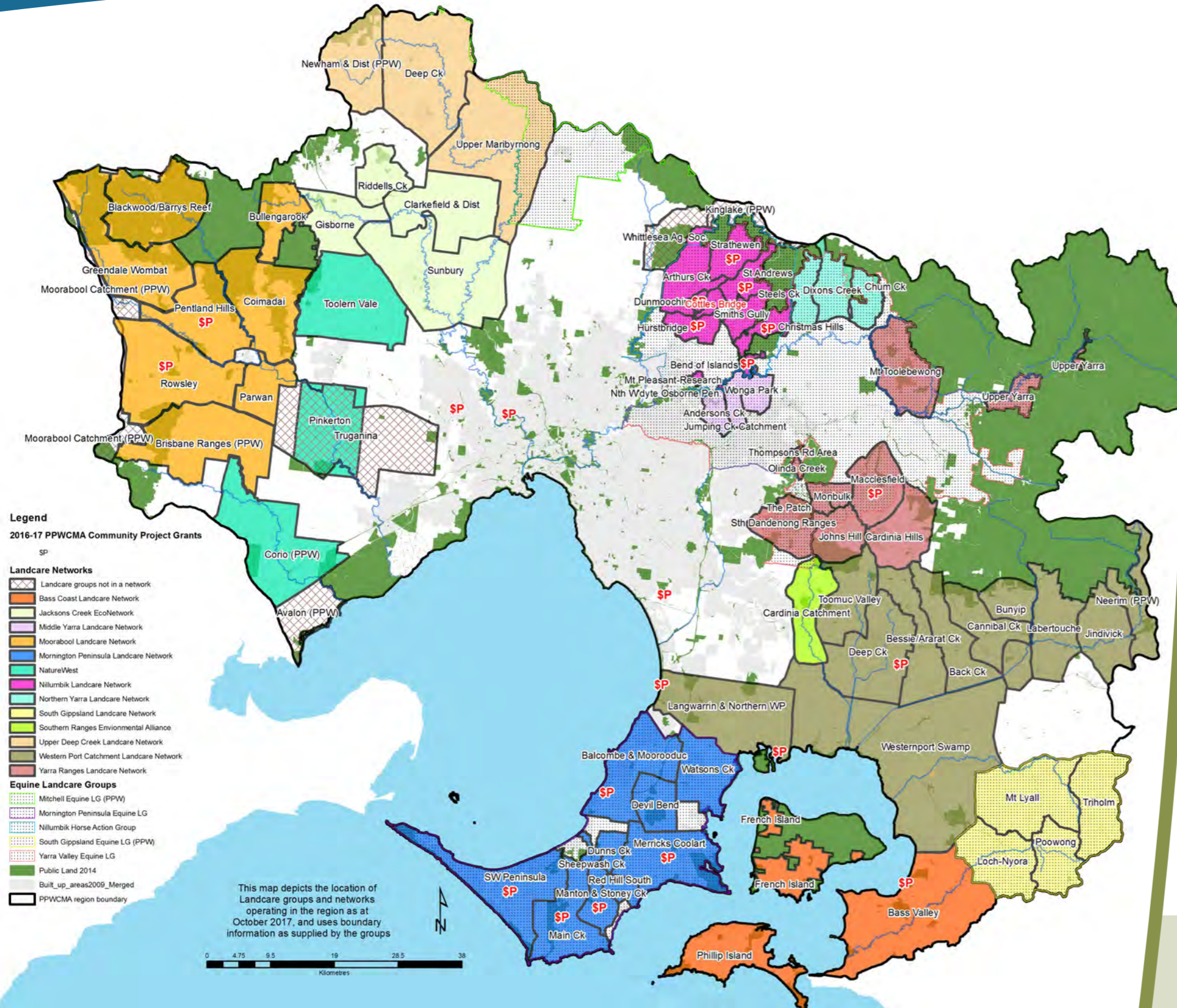
Other Funding secured by Landcare in 2016-17:

- An additional \$1,049,699 was reported as having been received from a variety of other sources

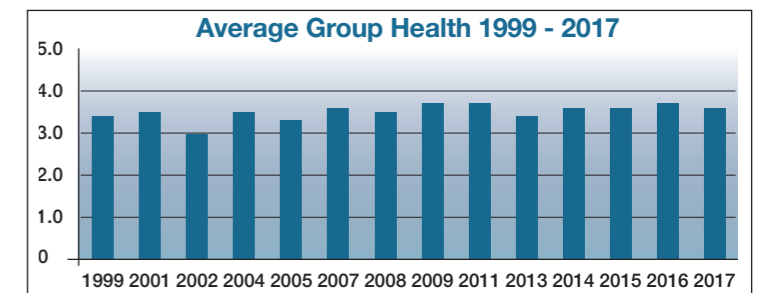
A reported 6,454 volunteers contributed an estimated \$2,002,200 value in volunteer time (@\$30/hr) delivering activities in 2016-17 related to on-ground works, learning, administration and communication

Landcare groups and networks reported for 2016-17 delivery of:

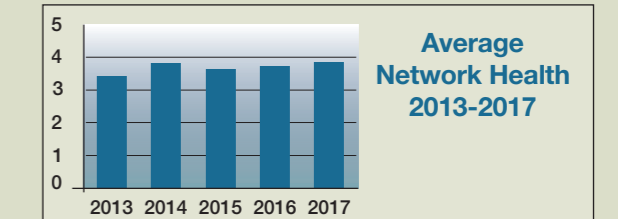
- a.** 352 ha of revegetation
- b.** 15 ha of direct seeding
- c.** 27 km of waterway protection from stock
- d.** 76 ha of remnant protection from stock
- e.** 206 ha of remnant protection through covenant or similar
- f.** 2,154 ha of weed control
- g.** 11,438 ha of rabbit control
- h.** 1,136 ha of fox control
- i.** 73 nest boxes made and installed
- j.** 41,580 tubestock planted



Reported Group Health in 2016-17 averaged 3.6 out of 5



Reported Network Health in 2016-17 averaged 3.9 out of 5



Landcare support in the Port Phillip and Western Port region

During 2016-17 Landcare in the region was supported by:

- 1 Regional Landcare Coordinator funded through the Victorian Landcare Program and employed by the PPWCMA
- 2 Sustainable Land Management Coordinators funded through the Australian Government National Landcare Program and employed by the PPWCMA
- 1 Regional Landcare Facilitator funded through the Australian Government National Landcare Program and employed by the PPWCMA
- 10 local Landcare Facilitators (4.98FTE) funded through the Victorian Local Landcare Facilitator Program and employed by various host organisations

During 2016-17 the PPWCMA delivered the following Landcare support activities:

- 6 events to celebrate 30 years of Landcare in Victoria (12 Landcare Networks promoted to 480 participants)
- 2 regional forums for Landcare Network Leaders (21 people from 9 Landcare networks and 3 agencies)
- 2 regional forums for Landcare Facilitators (20 people from 12 Landcare networks and 3 agencies)
- 6 facilitated Conservation Action Planning workshops to improve project design (19 people from 5 Landcare groups and networks)
- 5 Catchment Action Round Tables to improve collaboration for natural resource management (106 people from 38 Landcare groups and networks, 13 agencies, and 13 other organisations)

Victorian Landcare Program (VLP) return on investment into Landcare in the PPW region for 2016-17:

VLP investment into PPW region = \$961,194

- Victorian Landcare Grants (\$204,000) + Regional Landcare Coordinator (\$149,300) + Local Landcare Facilitators (\$376,894) + share of Statewide investments (head office, Landcare Gateway, Landcare magazine, Community Skills grants, etc. (\$231,000)

Estimated return on investment = \$3,982,681

- Leveraged funding – National Landcare Program (\$251,282) + other funding (\$1,049,699) + Volunteer time (as reported by 54 groups and 7 networks - \$2,002,200) + Volunteer time (extrapolated to remaining 30 groups and 6 networks @ 50% of reported averages) (\$679,500)

Return on investment: \$4.14 for every VLP dollar invested

This report reflects the activities undertaken by Landcare groups and networks only. Additional work undertaken by other community groups and volunteers is extensive and beyond the scope of this report card.

Cover photo: As part of the celebration of 30 years of Landcare in Victoria, participants at the Macedon Ranges Landcare Forum enjoyed a tour of the Mt William Stone Axe Quarry led by Wurundjeri Elder, Uncle Bill Nicholson in November 2016.

Back page photo: Western Port Catchment Landcare Network President, Marijke de Bever-Price, and PPWCMA's Regional Landcare Coordinator, Doug Evans, during a strategic planning session with the network.

