



PPWCMA Community Grants Program

Spatial Data Reporting

The PPWCMA is required to provide electronic maps of all on-ground works funded by the Victorian & Australian Governments. These maps are a geographical representation of what activities have been completed where, who did the work and when, and where the funding came from.

The Community Grants program has a requirement for participating groups to provide this information. There are several ways to do this of varying complexity. In order of preference by the PPWCMA, these are by using:

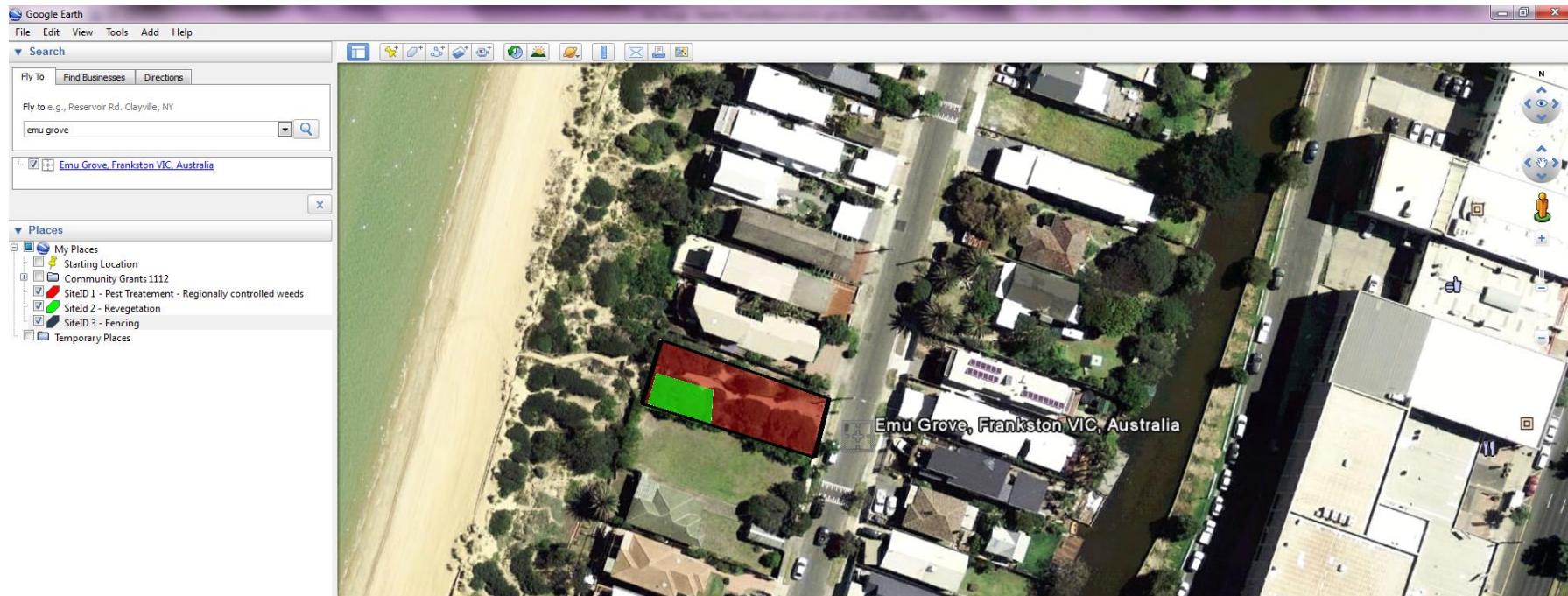
1. Submitting electronically in a spatial format such as to the PPWCMA
 - .kml or .kmz files (Google Earth)
 - ESRI shape files (ArcMap, OAAV online map) DELWP Mapshare,
 - Map Info, QGIS or other formats
2. An annotated aerial photo with drawings showing the location and type of works submitted to the PPWCMA

To be consistent, the following colours should be used when identifying your works:

- Green polygon (area) = Revegetation
- Red polygon (area) = Weed Control
- Yellow polygon (area) = Pest Animal Control
- Black line (length) = Fencing
- Light blue polygon (area) = Boundary of survey or plan

An example map and associated spreadsheet are over the page.

The PPWCMA recommends familiarising yourself with the method you propose to use before you begin undertaking on ground activities.



Example spreadsheet.

| Site ID | Year | Output | Qualifier | Notes | Unit of Measure | Qty | Date of Works | Protection Status | Tenure | Address | Town | Post Code | Collector |
|---------|------------|---------------------------------------|----------------------------|---------------|-----------------|-----|---------------|-------------------|---------|----------------|-----------|-----------|-------------------|
| 1 | 2011 12 | Pest Treatment | Regionally Controlled Weed | African Daisy | Ha | 0.5 | Jan 2012 | None | Private | 1234 Emu Grove | Frankston | 3199 | S. Thuan - PPWCMA |
| 2 | 2011 12 | Revegetate with indigenous vegetation | | 200 tubestock | Ha | 0.2 | Feb 2012 | None | Private | 1234 Emu Grove | Frankston | 3199 | S. Thuan - PPWCMA |
| 3 | 2011 12 | Fencing | | 5 wire | Km | 2.5 | Feb 2012 | None | Private | 1234 Emu Grove | Frankston | 3199 | S. Thuan - PPWCMA |

Note:

- Output, Qualifier, and unit of measure are all contained in your application form.
- Protection status e.g. none, on-title agreement (covenant), nature reserve etc.
- Tenure e.g. Private freehold, leased public land, public land nature reserve etc.